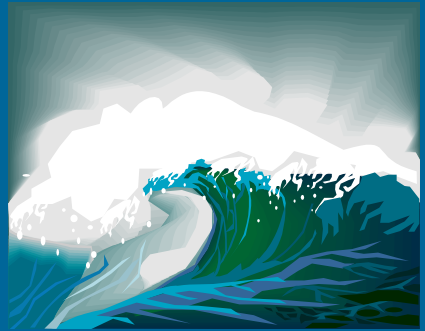


Tsunami Packs

Abel Insurance Agency has purchased 200 TSACK's and need your help to fill them with tsunami ready supplies. These TSACK's will then be donated to Riley Creek School. If the kids are in school when we have our own emergency evacuation it will be great to know that the packs will be full of supplies for their comfort and safety.



Items Needed

- **Bottled Water**
- **High Protein Snacks**
- **Space Blankets**
- **Crayons**
- **Water Purifier Tablets**
- **Collapsible Jugs**
- **Whistles**
- **Flashlight & Batteries or LightStix**



Abel Insurance Agency
Risk Management & Consulting Services

94210 Second Street, Gold Beach 97444
541-247-2415 **Hours: 8am-5pm**